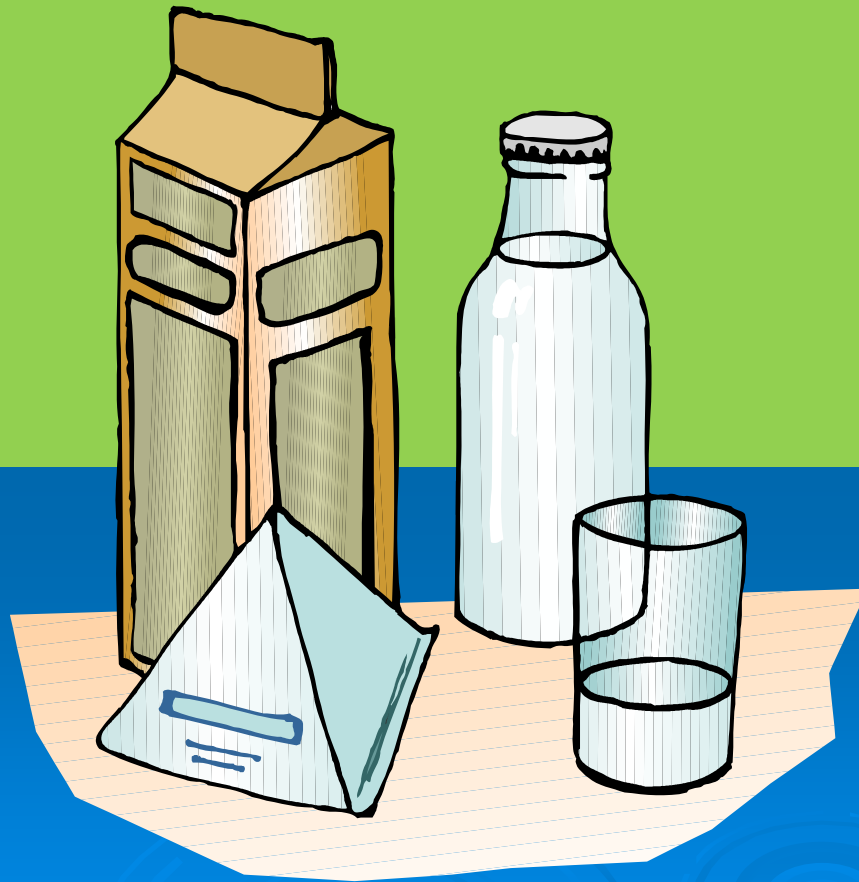


Capacity or Volume



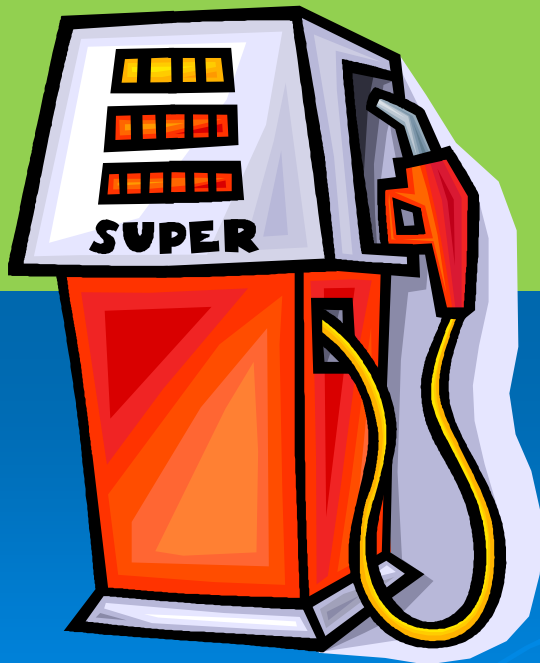
Capacity is a measure of volume

➤ The volume of a solid object is the amount of space it takes up

➤ If the object is hollow, the volume is the amount of space inside it



When you buy liquids like petrol,
the amount that you buy is
measured in litres.



A litre of petrol
costs about
£1.00

Bath Time



This tub will hold about 50 litres of water

Small amounts of liquid are measured in millilitres



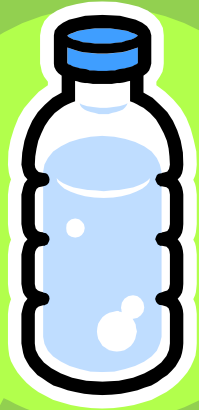
A teaspoon holds 5 millilitres

A cup holds about 250 millilitres

4 cups would make a litre



Estimate the capacity of these containers



500 millilitres



250 millilitres

Try these ...



2 litres



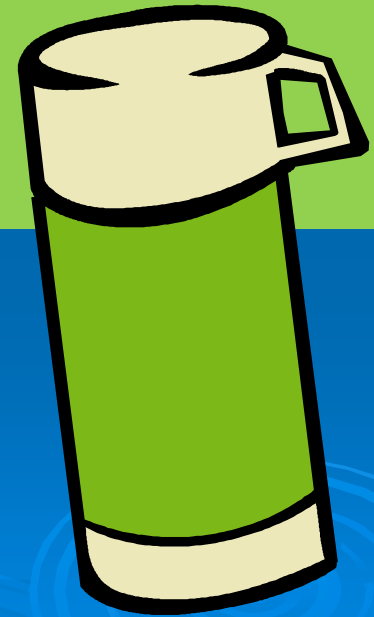
100 litres

How about these?

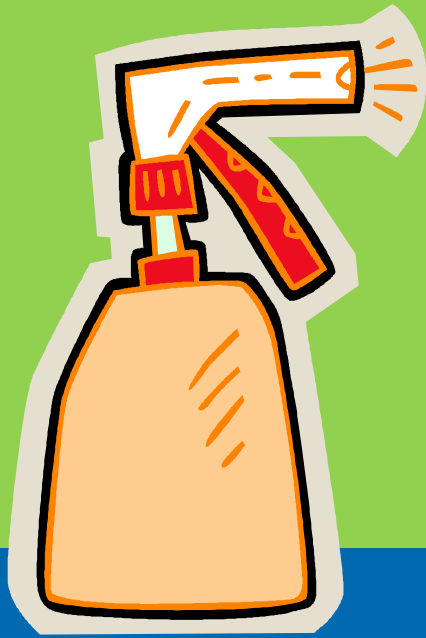


10 millilitres

500
millilitres
(half a litre)



and finally ...



550 ml



5 ml

Smoothies are popular



How many
millilitres of
juice do you
think this
fruit would
make?

Practice makes perfect



When you pick up a container at home, try and estimate its capacity. Then check to see how accurate your estimation was.