

Florence Nightingale



Name:

Class:

TRUE OR FALSE.

Tick the right box:

	<u>True</u>	<u>False</u>
Florence was a nurse.		
Florence was born on the 12 th May.		
Florence was a doctor.		
Florence died on the 13 th August.		
Florence only helped people in the day.		
Florence was known as the lady with the lamp.		
Florence did not want to be a nurse.		
Florence helped sick soldiers in the war.		
Florence trained other nurses.		
Florence helped to make hospitals a much cleaner place.		



Self Assessment



Florence Nightingale Word search.

F	Z	Q	W	A	S	E	H	R	N
L	A	M	P	U	C	W	O	U	I
O	X	A	Y	G	U	E	S	J	G
R	C	Y	T	U	T	F	P	I	H
E	V	K	D	S	A	Y	I	O	T
N	B	D	G	T	R	T	T	K	I
C	M	G	V	B	I	E	A	J	N
E	O	H	Z	K	H	E	L	P	G
S	P	B	W	J	P	W	C	R	A
D	O	C	T	O	R	Z	X	T	L
G	H	E	Q	O	N	U	R	S	E

Words to find:

LAMP

NIGHTINGALE

DOCTOR

HELP

AUGUST

FLORENCE

NURSE

HOSPITAL

MAY

SCUTARI

Self Assessment



Write a nurse acrostic poem using the letters below:

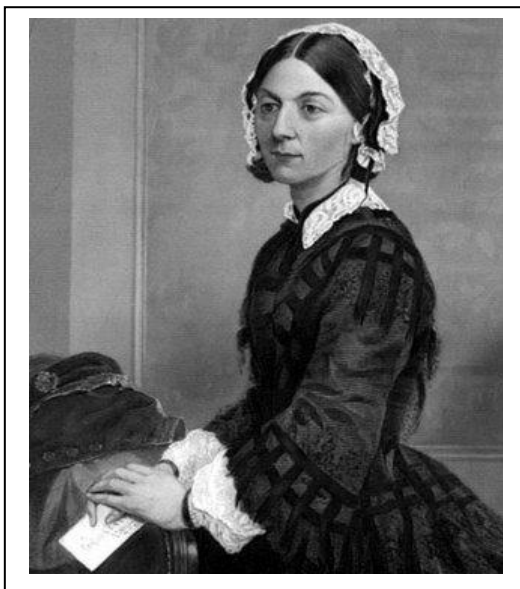
N

U

r

s

e



Self assessment



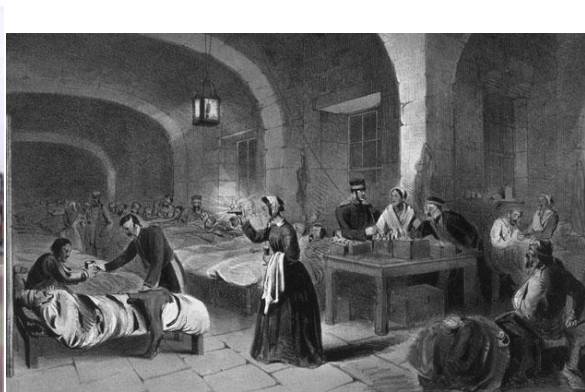
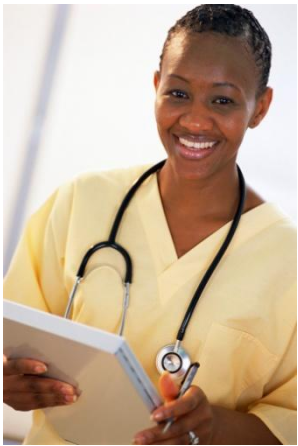
Florence Nightingale:

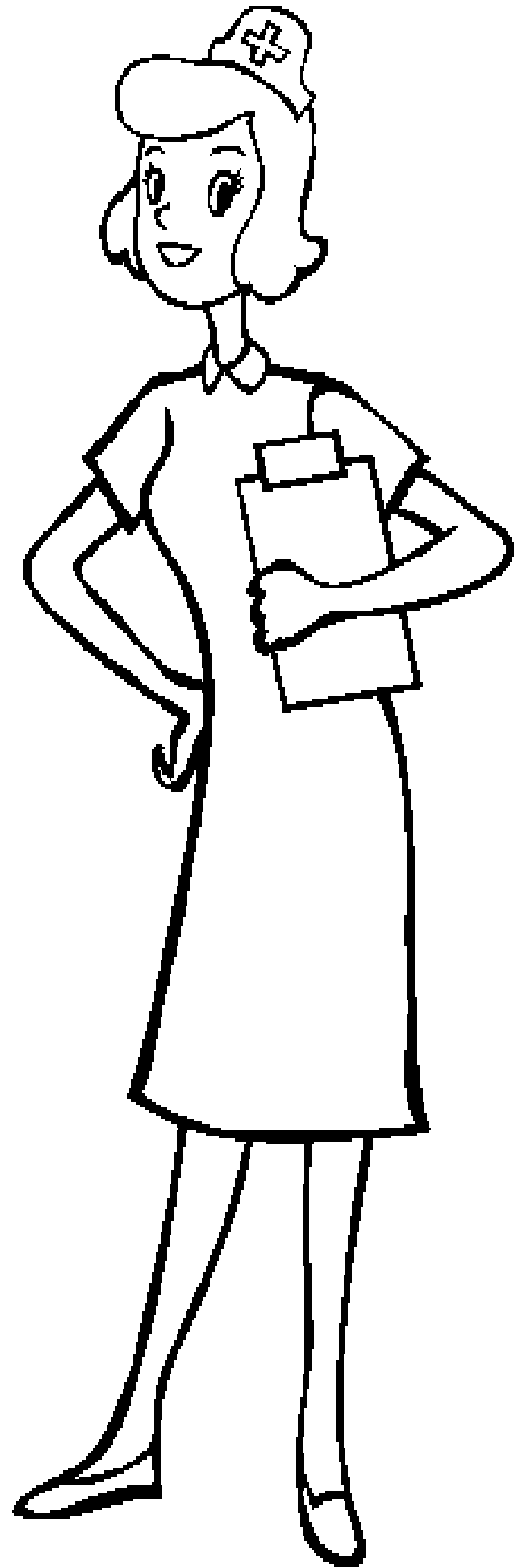
Then and Now Pictures to sort.

<u>Then</u>	<u>Now</u>

Self Assessment







Dictionary Definitions

Florence Nightingale

Responsibility _____

Hospital _____

Clean _____

Dirty _____

War _____

Nurse _____

Doctor _____



Florence Nightingale Quiz



1. When was Florence Nightingale born?

2. When did Florence Nightingale die?

3. True or false: Florence went to school as a child?

4. Why did Florence decide to become a nurse?

5. What award did Queen Victoria give to Florence?

6. When did the Crimean war start?

7. What Country did Florence travel to during the Crimean war?

8. True or False: Florence Nightingale helped to train more nurses? _____

9. What did Florence become known as because she worked by candle light at night?

10. Did Florence's parents want her to become a nurse? _____

11. Were the hospitals in Scutari dark and dirty or bright and colourful?

12. True or false: Florence helped to make hospitals a lot cleaner? _____

13. Did the hospitals in Scutari have electricity?

14. What year did the Crimean war end?



Famous nurses

Here is a picture of **Florence Nightingale**.
A famous nurse from the **1800's**.



Here is a picture of a nurse
today.



What are the **similarities** between these nurses?

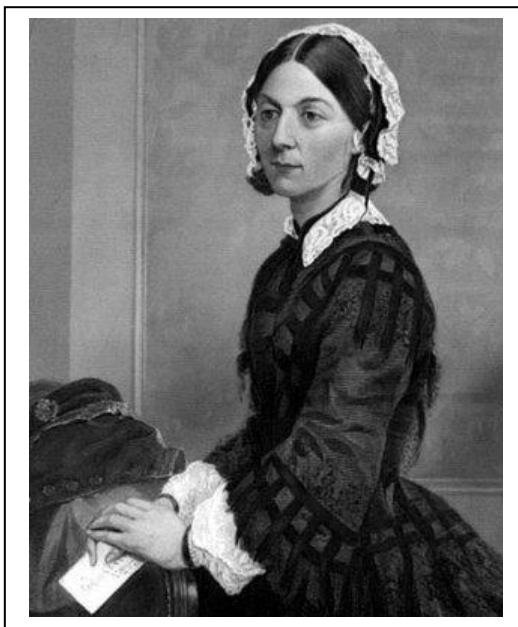
1. They both work hard to look after people and save lives.
- 2.
- 3.
- 4.
- 5.

What are the **differences** between these nurses?

1. Their clothes are very different in style, material and colour.
- 2.
- 3.
- 4.

Write a Florence acrostic poem using the letters below:

F
I
O
R
E
N
C
E



Self assessment





FLORENCE NIGHTINGALE
1820 - 1910