

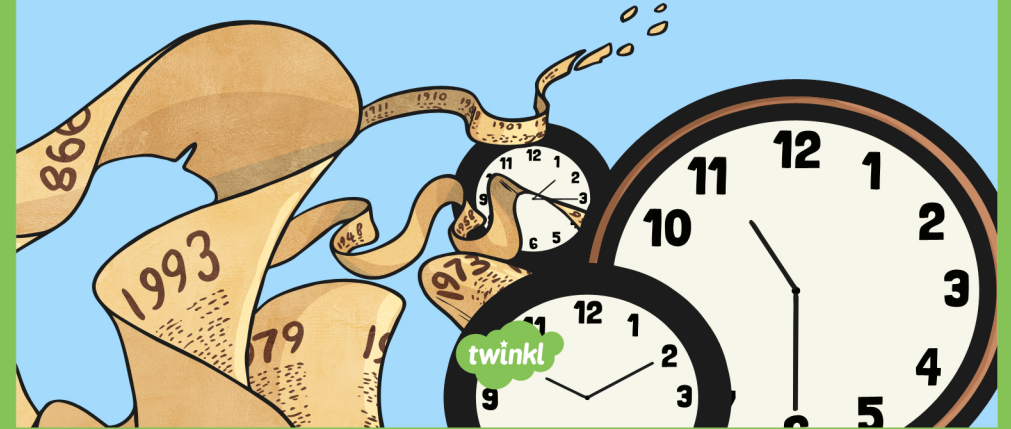
# Our Changing World

Past Statistics and Facts



# Our Changing World

Past Statistics and Facts



# Our Changing World

Past Statistics and Facts

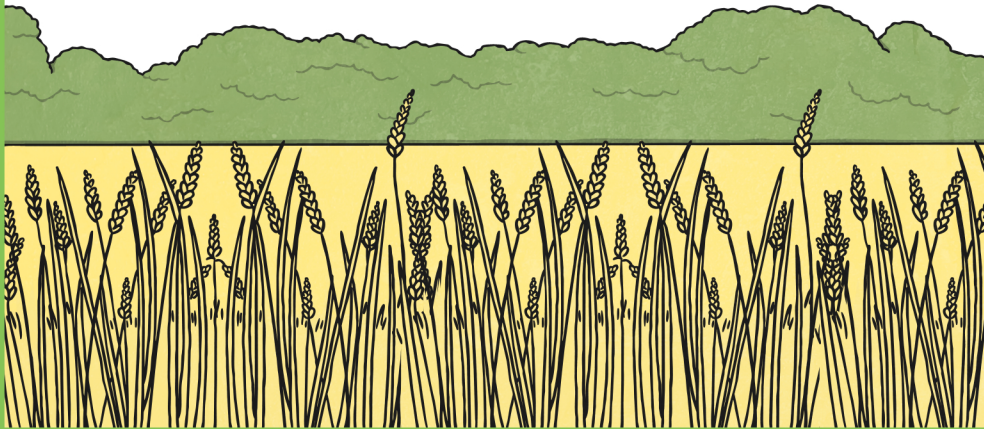


# Our Changing World

Past Statistics and Facts



Most people around the world  
in 1800 were farm workers.



twinkl.co.uk



Food in 1800 was  
mostly grown locally.

twinkl.co.uk

Grain-based foods  
made up the greater  
part of a person's diet.



twinkl.co.uk

Many families in the UK  
had 10 or more children.



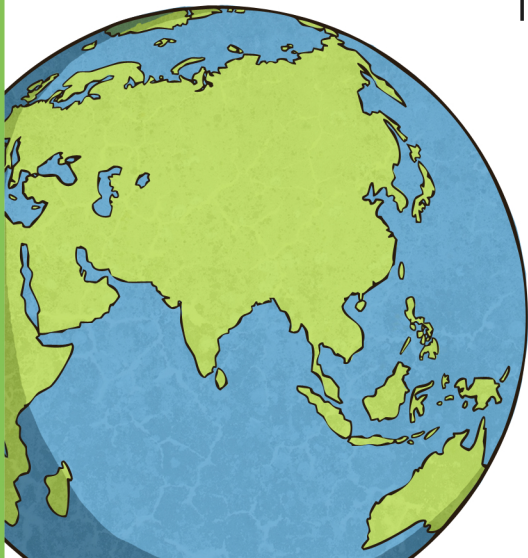
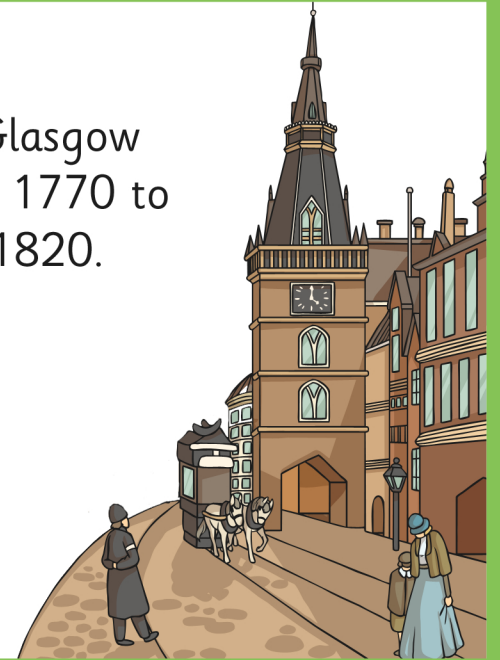
twinkl.co.uk





Children started work at around age 5 in the UK.

The population of Glasgow grew from 30 000 in 1770 to over 200 000 in 1820.

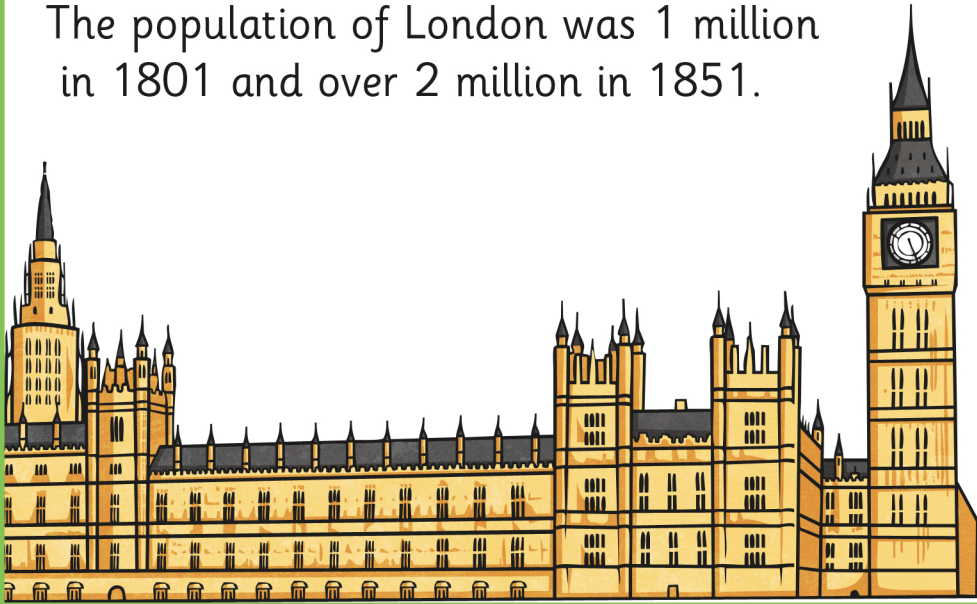


The population of the Earth in 1800 was around 1 billion.

Schools in the UK charged fees to attend.

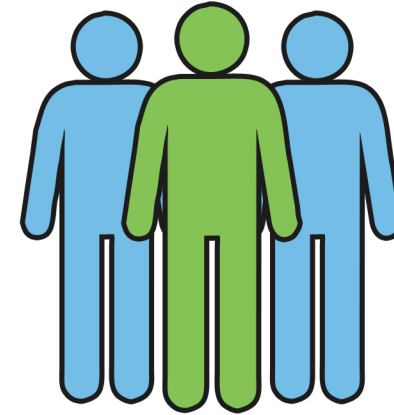


The population of London was 1 million in 1801 and over 2 million in 1851.



twinkl.co.uk

In 1821, over 1/3 of London's population had not been born in the city.



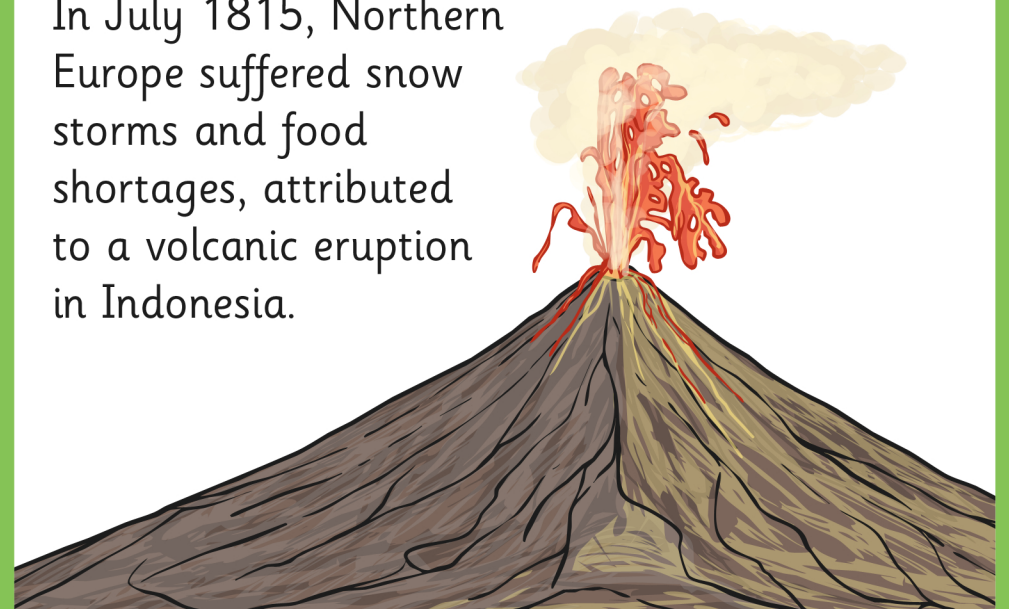
twinkl.co.uk



Suburbs of larger cities began to develop with larger, more expensive houses being built.

twinkl.co.uk

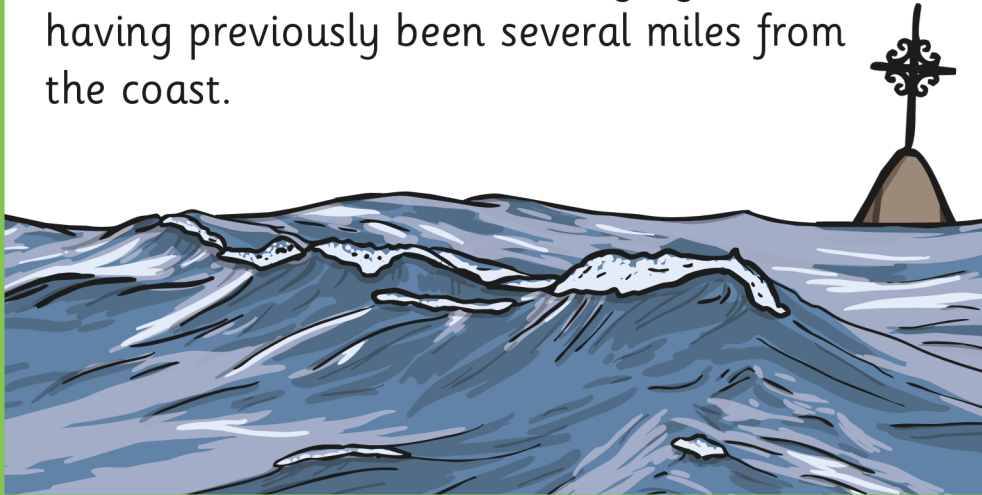
In July 1815, Northern Europe suffered snow storms and food shortages, attributed to a volcanic eruption in Indonesia.



twinkl.co.uk

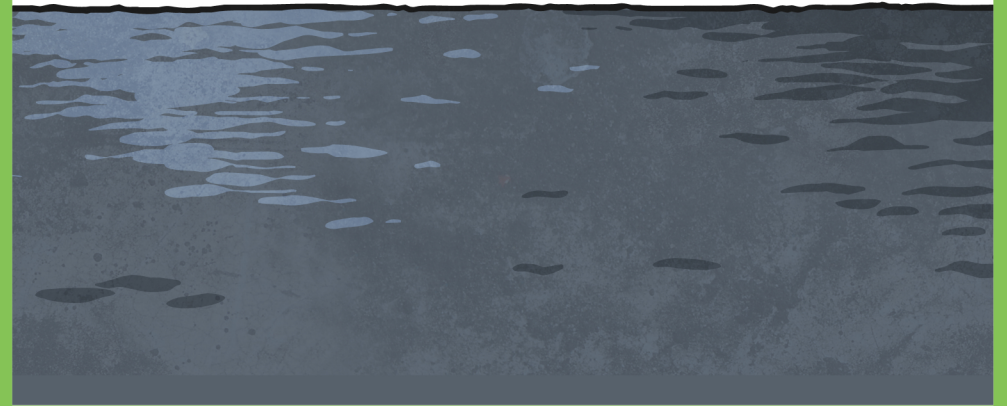


In 1789 All Saints Church, Walton-on-the-Naze, Essex was washed away by the sea, having previously been several miles from the coast.



twinkl.co.uk

Ravenspurn, Yorkshire was lost to a flood when sandbanks shifted in the early 1800s.



twinkl.co.uk

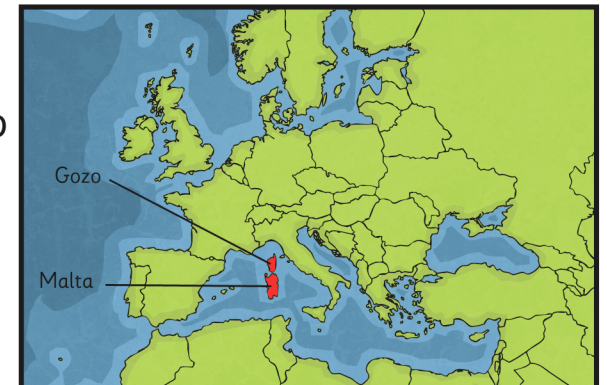
The Act of Union is signed to unite the Kingdom of Great Britain and the Kingdom of Ireland into the United Kingdom of Great Britain and Ireland.



twinkl.co.uk

The French garrison in Valletta surrenders to British troops who had been called at the invitation of the Maltese.

The islands of Malta and Gozo became a Crown Colony in 1813.



twinkl.co.uk