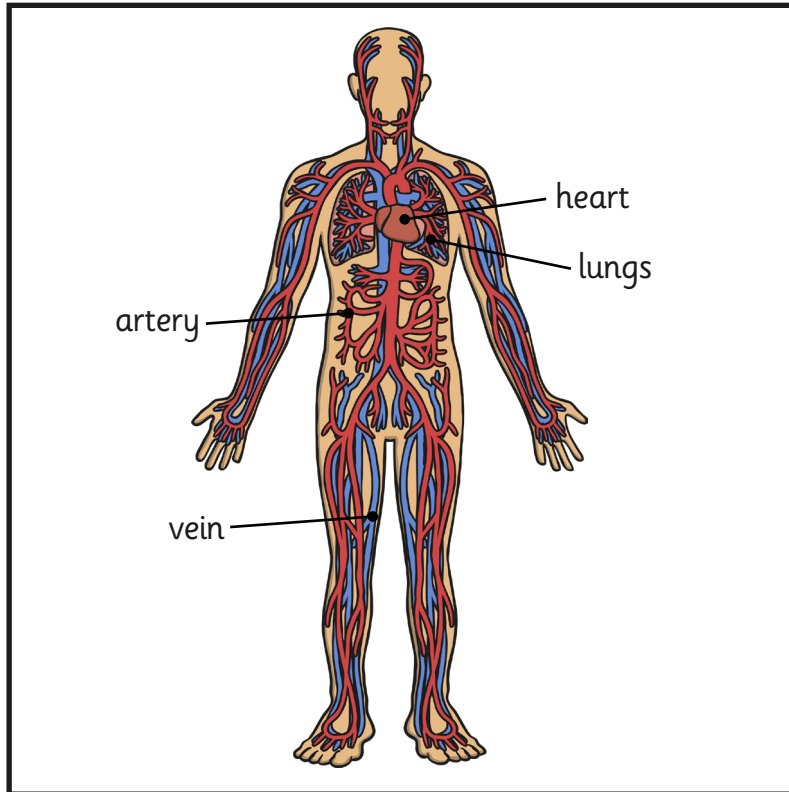
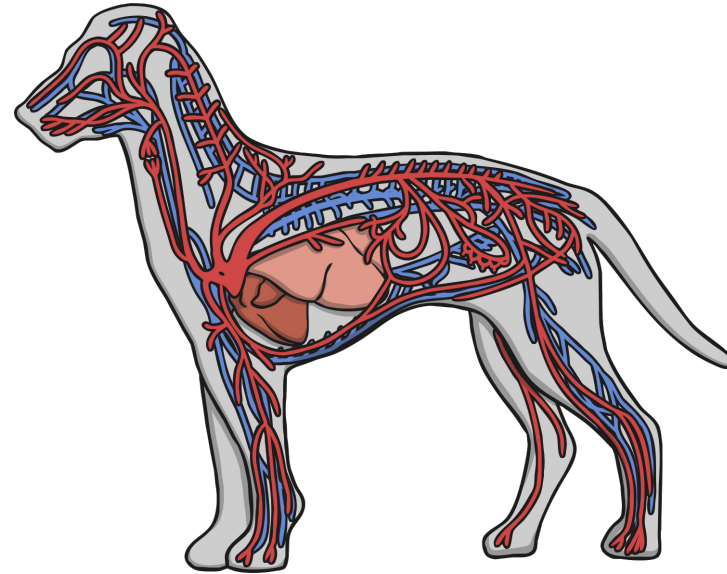


Comparing Circulatory Systems



Label the heart, lungs and blood vessels (you only need to identify one of the blood vessels not all) above.

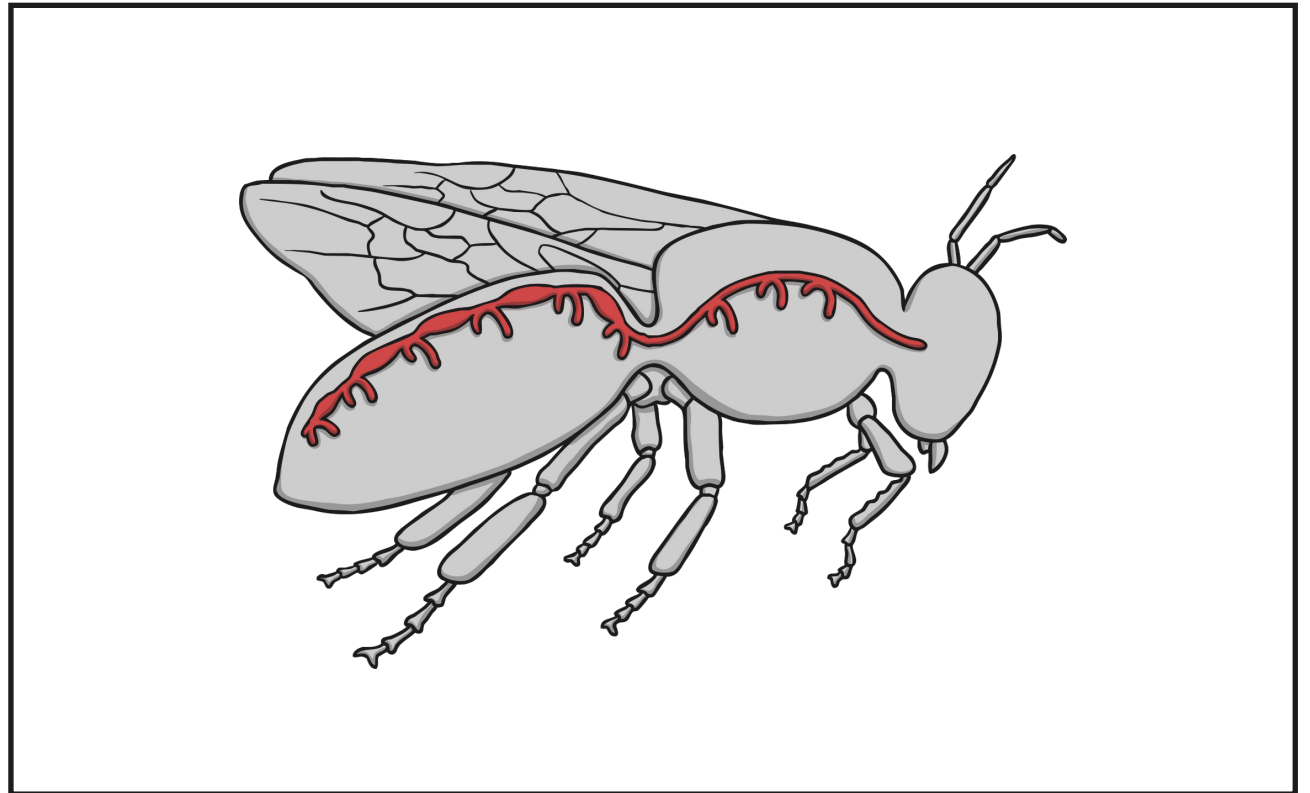
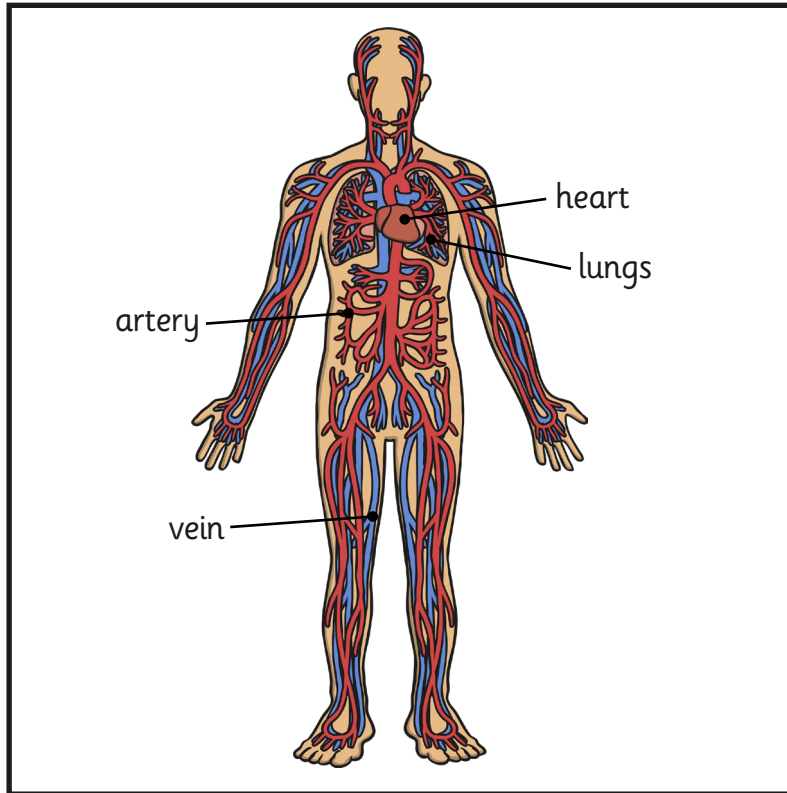


Compare the circulatory systems of the human and the dog:

What is the same?

What is different?

Comparing Circulatory Systems

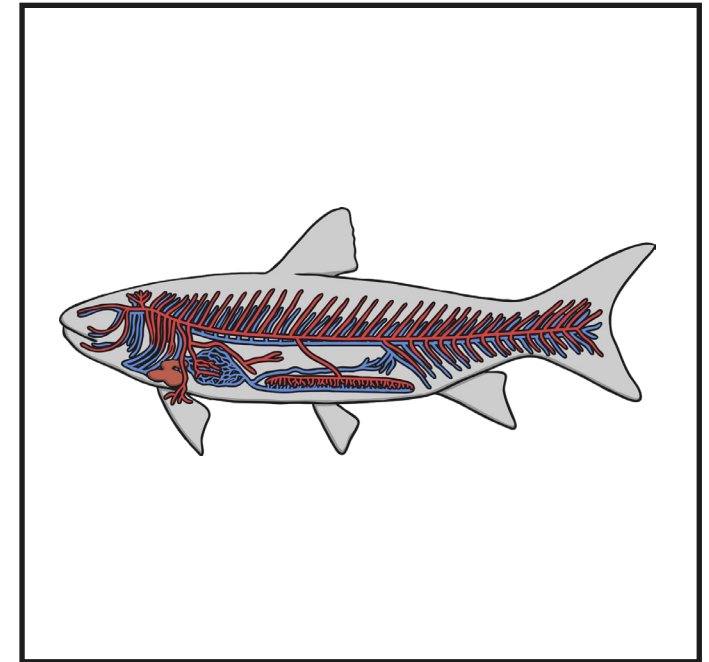
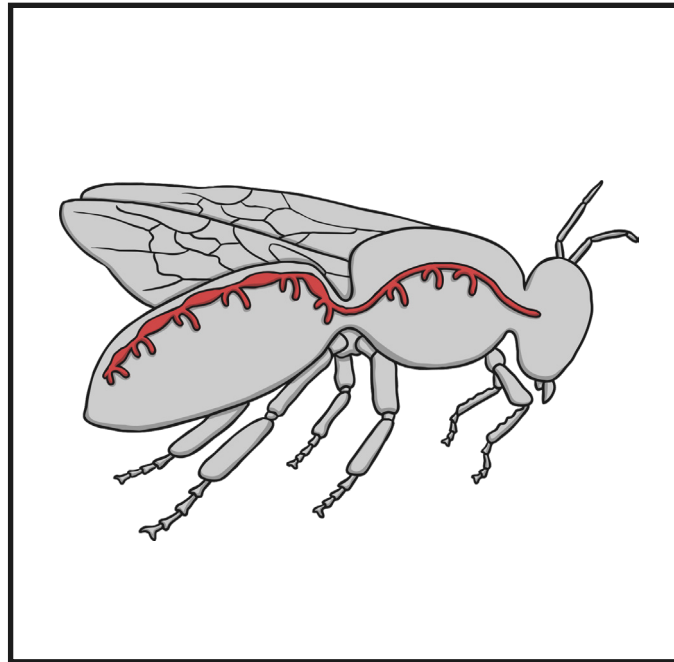
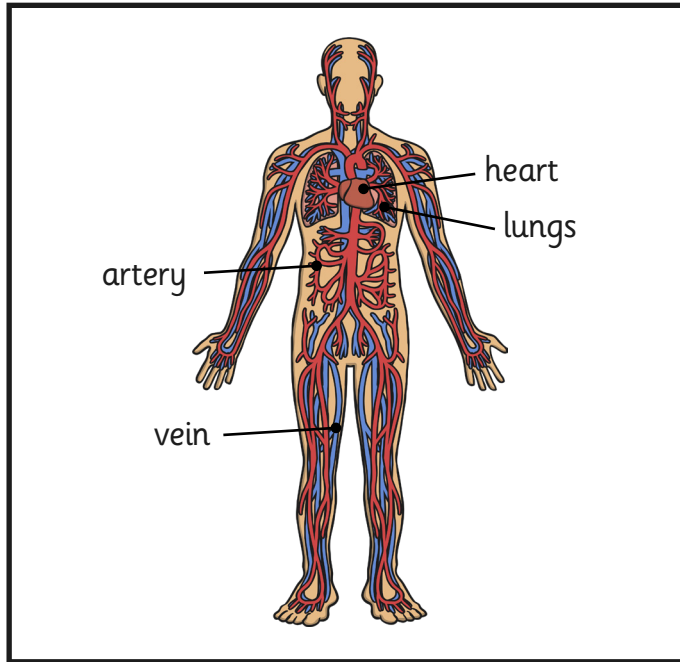


Compare the circulatory systems of the human and the bee:

What is the same?

What is different?

Comparing Circulatory Systems



Compare the circulatory systems:

How are they similar?

How are they different?
