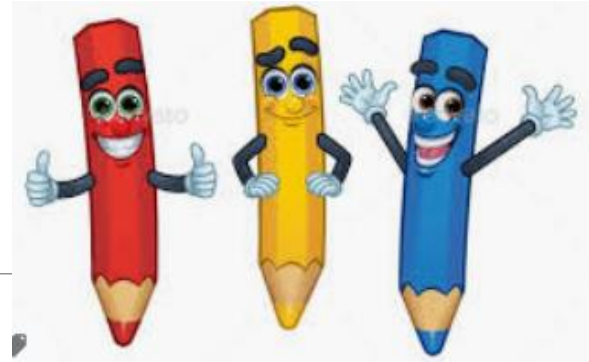


L.O - To draw from a description.



Success Criteria

- To listen carefully.
- Think about what the vocabulary means.
- To create an image of a character in your head.
- Use image to draw a Slodge

— This lesson is about a fictional character called Slodge.
I am not going to tell you anything about Slodge, I'm
not even going to read you the story.

I am going to give you a physical character description.
You will need to listen carefully, use your imagination.
Let's start with an easy physical exercise.

Exercise 1.

Stand up .

Draw the following objects in the air with your finger.

Draw a circle in the air.

Draw a triangle in the air.

Now draw a tree in the air .

Can you see how we already remember what shapes and things look like.

Exercise 2

Close your eyes.

Imagine in your head , a circle.

It is a large circle.

It is a large ,yellow circle.

It is shiny .

It has 3 eyes.

It has a smile.

Now draw it on your paper.

Read the description on the next page
then draw the character using the
description.

Description (I shall leave this up for you to read)

1. Slodge is pear shaped (like the fruit).
2. Slodge is hairy all over.
3. Slodge is green.
4. Slodge has thin, skinny arms.
5. His arms are stripy.
6. Slodge has two eyes , which are black.
7. Slodge has a mouth, but no teeth.
8. Slodge has 2 little ears on the top of his head.
9. Slodge has 2 little feet , beneath him.



Here is Slodge!

How did you do ?
Was your drawing
similar?
What was
different?



If we have time , let's try another one.

Let's draw a Snawk!

Again listen to the description and try to imagine a snawk in your mind.



Let's Now use your other paper to draw a Snawk !

Description (I shall leave this up for you to read).

1. A Snawk has a big snake-like body.
 2. A Snawk has two small , black eyes.
 3. A Snawk has a huge open mouth.
 4. A Snawk has lots of pointy sharp small teeth.
 5. A Snawk has spikes around it's neck.
 6. It has a tail with five points on it.
- The Snawk is yellow and has some scales that are darker.

Here is Snawk!

How did you do ?
Was your drawing
similar?
What was
different?

